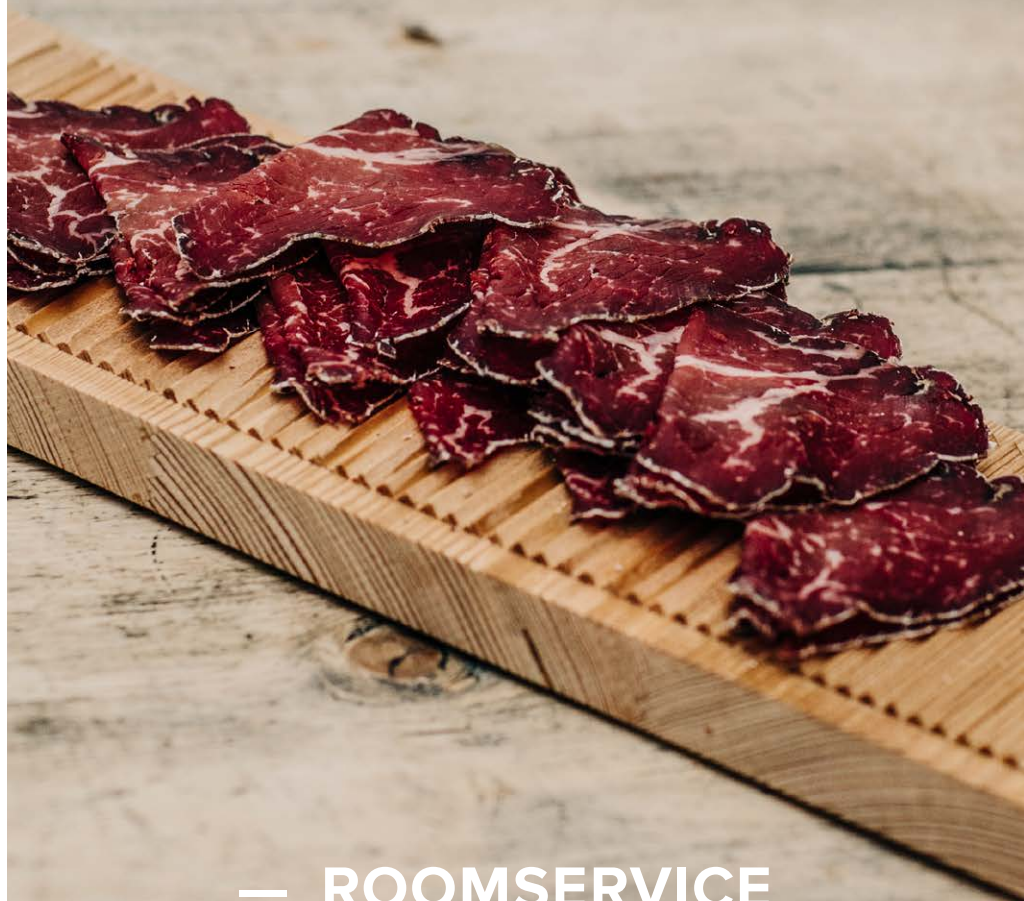

BELVEDERE
HOTEL **FAMILIE**



— **ROOMSERVICE**

STARTERS

Grisons air dried meat from the butcher Hatecke with pickled vegetables and bread	24
Mountain cheese from the region with fig mustard, pear bread and nuts	21
Alpine Tapas with products from the region from 2 people	per person 26

OUR CLASSICS

Tartar of Swiss beef, optionally with brioche, spice cream and pickled vegetables	70 g 26 140 g 36
Barley soup with Grisons air dried meat and chives with Vienna sausage from the butcher Zanetti	VEGAN POSSIBLE 14 +6
Mixed leaf salad with egg from Sent, cucumber, carrots and garden cress served with French, balsamic or Italian dressing	14
— Chicken skewers wrapped in pumpkin seeds with lemon-pepper dip	+12
— Goat cheese from Tschlin with chilli and plum chutney	+9
— Beetroot, apple and sunflower seeds	VEGAN +9
Swiss pork schnitzel with french fries and salad	34
Burger of Swiss beef with french fries (rye bread, tomato, cucumber, lettuce and cocktail sauce)	34

DESSERTS

Fruit tart	8
Cake from the daily special	9
Engadine nut cake from the pastry Benderer	8

Information on allergens and ingredients is available from our service team on request.

All prices in CHF incl. VAT.

MINERAL WATER

Passugger sparkling water	4.7 dl	6
	7.7 dl	9
Allegra still water	4.7 dl	6
	7.7 dl	9
Mountain water from Scuol	3 dl	3
	5 dl	5

SOFT DRINKS

Vivi Kola Vivi Kola Zero	3.3 dl	5.50
Elmer Citro Sinalco	3.3 dl	5
Schweppes Bitter Lemon Ginger Ale	2 dl	5.50
Swiss Mountain Spring Tonic Water	2 dl	6
Ramseier Apple juice Apple spritzer	3.3 dl	5

RAST COFFEE SPECIALITIES

Coffee Espresso	5
White coffee Cappuccino Latte Macchiato	6.80
Hot chocolate Ovaltine	6.80

BEER

Bun Tschlin cler	3.3 dl	7.50
Erdinger Weissbier	5 dl	8.50

SPARKLING WINE

Bündner Brüt Selection «Belvedere»	1 dl	8.50
	7.5 dl	58
Moët & Chandon Brut Imperial Ice	1 dl	16
	7.5 dl	110

There is no additional room service charge for these drinks.

For orders, please dial no. 91 or 081 861 06 06.

You can find our wine offer here in our **wine list**.